



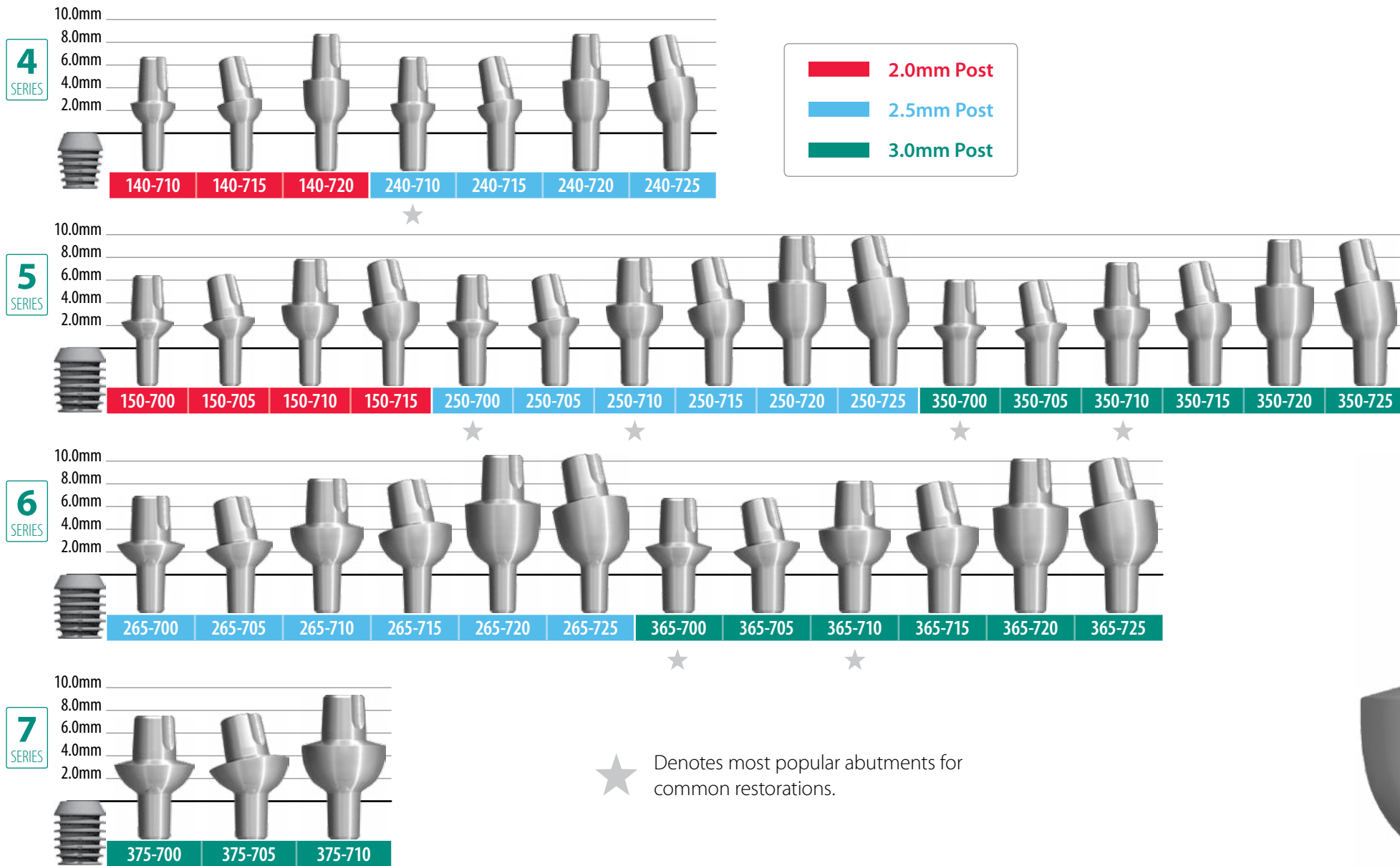
UNIVERSAL

ABUTMENT SYSTEM



Since 1985 » Simple. Predictable. Profitable.

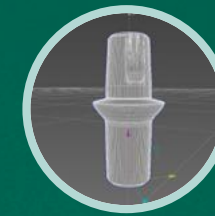
UNIVERSAL ABUTMENT MEASUREMENT GUIDE



UNIVERSAL ABUTMENT SYSTEM



Bicon's 0° and 15° Universal Abutments are individually labelled indicating their series and profile



Bicon Universal Abutments are available as part of digital libraries for use with leading CAD/CAM systems



Bicon Universal Abutments are ideal for all restorations including Integrated Abutment Crowns™ (IACs) and TRINIA™ restorations



Bicon Universal Abutments are designed with three profiles while maintaining the integrity of the hemispherical base



Bicon Universal Abutments feature color-coordinated prosthetic sleeves for impression making and temporization procedures



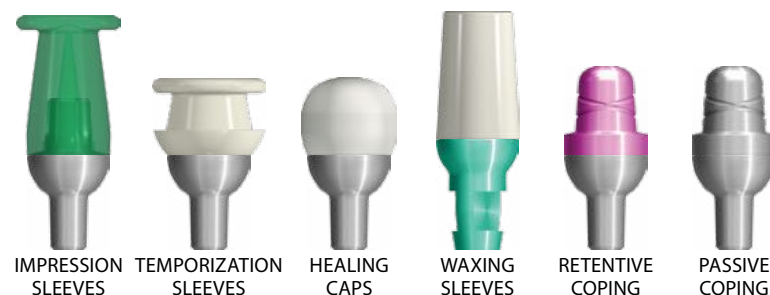
Bicon Universal Abutments have a novel PEEK healing cap to preserve the emergence profile and to provide patient comfort



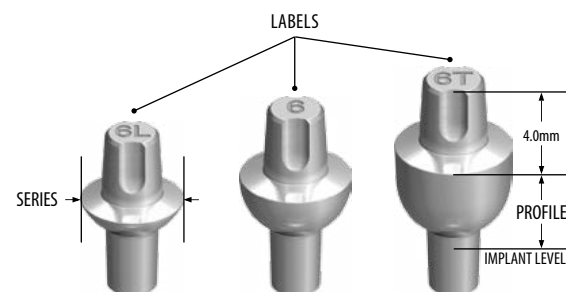
Bicon Universal Abutments feature color-coordinated transfer dies and impression sleeves to assist the selection of the proper transfer die



UNIVERSAL ABUTMENT COMPONENTS



Choose the appropriate prosthetic components corresponding to the label on the head of each abutment.



SERIES	PROFILE		
	LOW	STANDARD	TALL
4		4	4T
5	5L	5	5T
6	6L	6	6T
7	7L	7	



IMPRESSION SLEEVE



TEMPORIZAZION SLEEVE



HEALING CAP



WAXING SLEEVE



ANALOG



IMPRESSION SLEEVE



TEMPORIZAZION SLEEVE



HEALING CAP



WAXING SLEEVE



ANALOG



RETENTIVE COPING



PASSIVE COPING



IMPRESSION SLEEVE



TEMPORIZAZION SLEEVE



HEALING CAP



WAXING SLEEVE



ANALOG



RETENTIVE COPING



PASSIVE COPING



IMPRESSION SLEEVE



TEMPORIZAZION SLEEVE



HEALING CAP



WAXING SLEEVE



ANALOG



IMPRESSION SLEEVE



TEMPORIZAZION SLEEVE



HEALING CAP



WAXING SLEEVE



ANALOG



IMPRESSION SLEEVE



TEMPORIZAZION SLEEVE



HEALING CAP



WAXING SLEEVE



ANALOG

Choose the appropriate prosthetic components corresponding to the label on the head of each abutment.