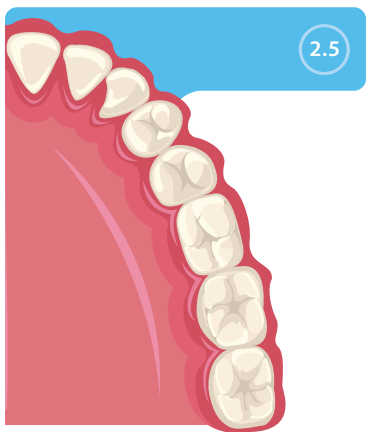
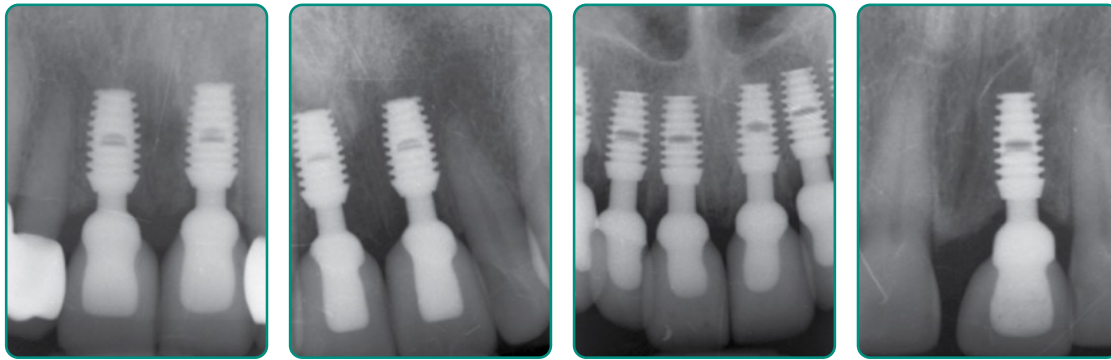




MAX 2.5TM IMPLANTS



*“Designed exclusively for maxillary anterior
single-unit restorations.”*

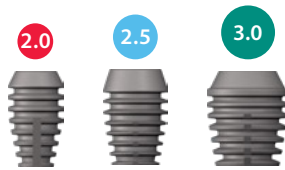


MAX 2.5™

MAXILLARY ANTERIOR IMPLANTS

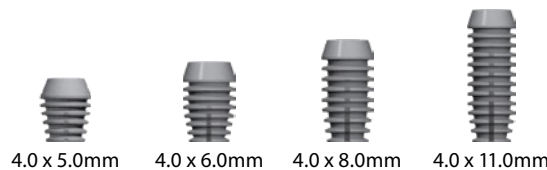
2.5mm well implants have been designed exclusively for maxillary anterior single-unit restorations. For any other restoration, including maxillary anterior splinted prostheses, overdentures, or fixed-removable applications, it is strongly recommended to avoid 2.5mm well implants.

In posterior sites, the 2.5mm post abutments may be too retentive.



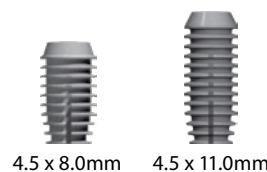
4.0mm Diameter

Part No.	Diameter	Length	Surface
340-255	4.0mm	5.0mm	Integra-CP®
340-256	4.0mm	6.0mm	Integra-CP®
340-258	4.0mm	8.0mm	Integra-CP®
340-251	4.0mm	11.0mm	Integra-CP®
140-258	4.0mm	8.0mm	Integra-Ti®



4.5mm Diameter

Part No.	Diameter	Length	Surface
345-258	4.5mm	8.0mm	Integra-CP®
345-251	4.5mm	11.0mm	Integra-CP®
145-258	4.5mm	8.0mm	Integra-Ti®



Highlights

The MAX 2.5™ Implant has an enhanced locking taper connection that has been designed exclusively for maxillary anterior single-unit restorations. Advances in manufacturing capabilities have allowed Bicon to offer this innovation with a 2.5mm diameter internal connection providing greater retention.

- Enhanced locking taper connection with a 2.5mm diameter that still allows for retrievability
- Available in six implant sizes with a full range of abutments
- MAX 2.5™ Implants complement Bicon's SHORT® and NARROW® Implants.

INCREASED TORQUE TO REMOVE

2.5mm vs. 2.0mm Post **2.5** **76% MORE**

2.5mm vs. 3.0mm Post **2.5** **47% MORE**

Dublin Institute of Technology, Dublin, Ireland • November 2009