

DIGITAL LIBRARY GUIDE  
**3Shape**

# BICON DIGITAL LIBRARY GUIDE: **3Shape**

## **Table of Contents**

<b>Download the Latest Bicon Digital Library</b> .....	3
<b>Requirements</b> .....	4
<b>Remove Old Libraries Before Installing New Libraries</b> .....	4
<b>Importing the Bicon Library into the 3Shape Dental System</b> .....	5

# BICON DIGITAL LIBRARY GUIDE: 3Shape

## Download the Latest Bicon Digital Library

To download the latest Bicon library, go to the Bicon web site at the following link:

[http://www.bicon.com/bicon\\_digital\\_libraries.html](http://www.bicon.com/bicon_digital_libraries.html)

Wednesday, June 27th 2018 12:33PM EDT CONTACT US **DIGITAL PROSTHETICS** ONLINE STORE SUPPORT

**bicon** Since 1985 » Simple. Predictable. Profitable.

HOME OVERVIEW PRODUCTS CASES VIDEOS COURSES CALENDAR MANUALS DOWNLOADS PUBLICATIONS

Clinically proven since 1985, Bicon's unique dental implants and revolutionary clinical techniques have not only passed the test of time, but also continue to lead implant dentistry. We welcome your joining Bicon clinicians from around the world, so that both you and your patients may also enjoy the many clinical benefits of Bicon implants.

**BICON'S 1.5° LOCKING TAPER**  
• Time-tested stable connection  
• Proven bacterial seal

**BICON'S SLOPING SHOULDER**  
• Space for bone over the implant

**SINCE 1985 SHORT IMPLANTS**

UPCOMING COURSES  
7/7 Live OP • Rome, Italy  
7/29 Live OP • Frankfurt-Hahn, Germany  
8/27-31 Cartagena Surgical Course • Cartagena, Colombia

Wednesday, June 27th 2018 12:33PM EDT CONTACT US | DIGITAL PROSTHETICS ONLINE STORE SUPPORT

**bicon** Since 1985 » Simple. Predictable. Profitable.

HOME OVERVIEW PRODUCTS CASES VIDEOS COURSES CALENDAR MANUALS DOWNLOADS PUBLICATIONS

BICON DIGITAL PROSTHETICS **BICON DIGITAL LIBRARIES** INTEGRATED SYSTEMS

**Bicon Digital Prosthetics Rx**

Wednesday, June 27th 2018 12:35PM EDT CONTACT US | DIGITAL PROSTHETICS ONLINE STORE SUPPORT

**bicon** Since 1985 » Simple. Predictable. Profitable.

HOME OVERVIEW PRODUCTS CASES VIDEOS COURSES CALENDAR MANUALS DOWNLOADS PUBLICATIONS

BICON DIGITAL PROSTHETICS **BICON DIGITAL LIBRARIES** INTEGRATED SYSTEMS

**Bicon Digital Libraries**

Please download the files below to work with Bicon products digitally in your CAD/CAM software.

	<b>3shape</b> Bicon Universal Abutments Library Version 1.4.0 (DME file)		<b>dental wings</b> Bicon Universal Abutments Library Version 1.0 (ZIP file)		<b>exocad</b> Bicon Universal and Fixed-Detachable Abutments Library Version 2.1 (7z file) Special Instructions PDF
	<b>3shape</b> Bicon Fixed-Detachable Abutments Library Version 1.3.0 (DME file) <b>Caution</b>		<b>dental wings</b> Bicon Fixed-Detachable Abutments Library Version 1.0 (ZIP file)		<b>3shape</b> Bicon Fixed-Detachable Abutments Library Using Castable Copings Version 1.0 (DME file) <b>Caution</b>

Download the desired 3Shape library and save it to your desktop (or other preferred location).

# BICON DIGITAL LIBRARY GUIDE: 3Shape

## Requirements

The Bicon libraries use Bicon scan bodies, available for purchase on our webstore at: <https://store.bicon.com/digital-prosthetics/scan-posts/>

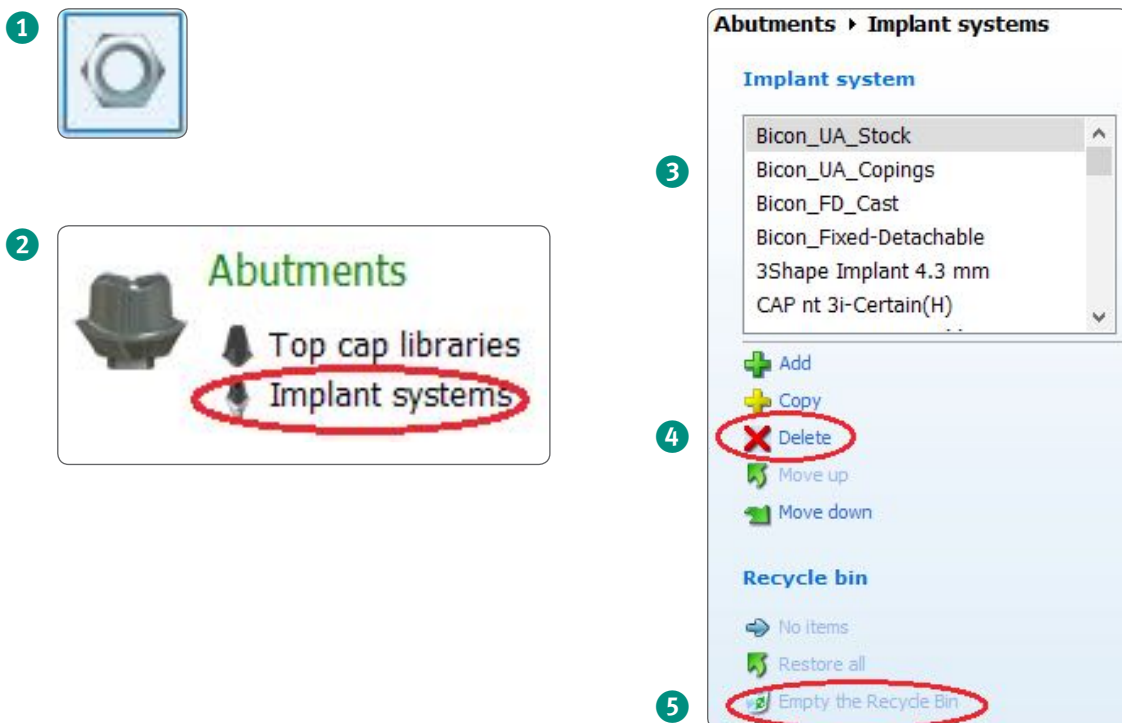
### Potential preconditions for usage of our libraries:

- ▶ Dental System 2016 or newer
- ▶ Abutment Designer Module
- ▶ Implant Bars/Bridge Design Module
- ▶ Model Builder STL

## Remove Old Libraries Before Installing New Libraries

If you have an older version of the Bicon library installed on your computer, you need to follow the instructions below. If this is the first Bicon library being installed, you can skip to the next section.

1. Open the **Dental System Control Panel** by clicking on the appropriate icon either from the Dental Manager or from a dedicated shortcut.
2. In the Dental System Control Panel, click on the **Implant systems** option in the Abutments category.
3. Select the old library by highlighting it in the Implant system box. Bicon libraries will have the prefix "Bicon".
4. Press **Delete**.
5. Press **Empty the Recycle Bin**.

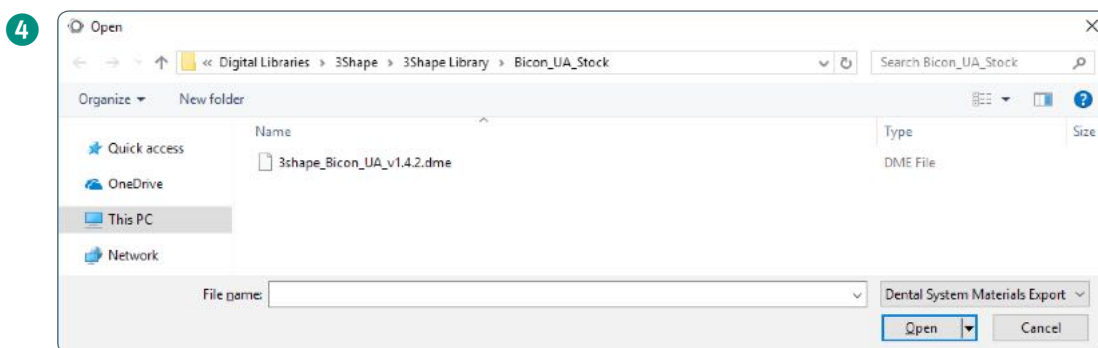
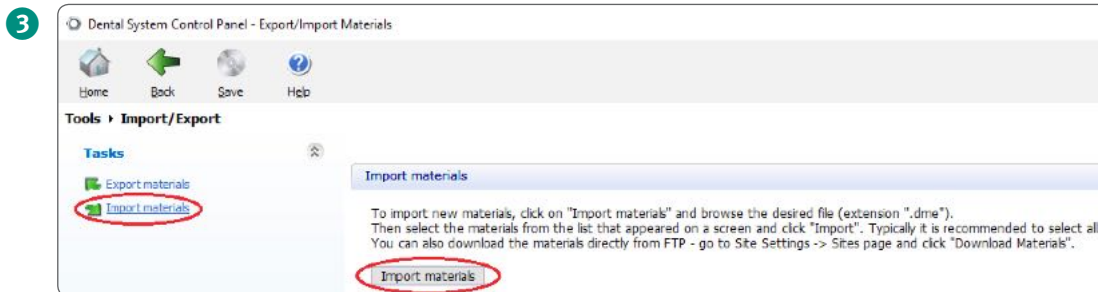


# BICON DIGITAL LIBRARY GUIDE: 3Shape

## Importing the Bicon Library into the 3Shape Dental System

After removing any previous versions of the Bicon library, the import of the new version can be initiated.

1. Open the **Dental System Control Panel** by clicking on the appropriate icon either from the Dental Manager or from a dedicated shortcut.
2. In the Dental System Control Panel, click on the **Import/Export** option in the Tools category.
3. This will open the Import/Export window. Click on either **Import Materials** button.
4. Choose the **.DME file** to import in the window that opens.



# BICON DIGITAL LIBRARY GUIDE: 3Shape

## Importing the Bicon Library into the 3Shape Dental System (continued)

5. Choose which implant systems, materials, or processes to import. Press **Import** when ready.  
**NOTE:** If already installed libraries have the same material file, a pop-up window may appear. Follow the recommendation from 3Shape. Typically, the option selected is **Update**.
6. When the library has been imported, a message will appear.
7. Save changes to the 3Shape Dental Control Panel.

