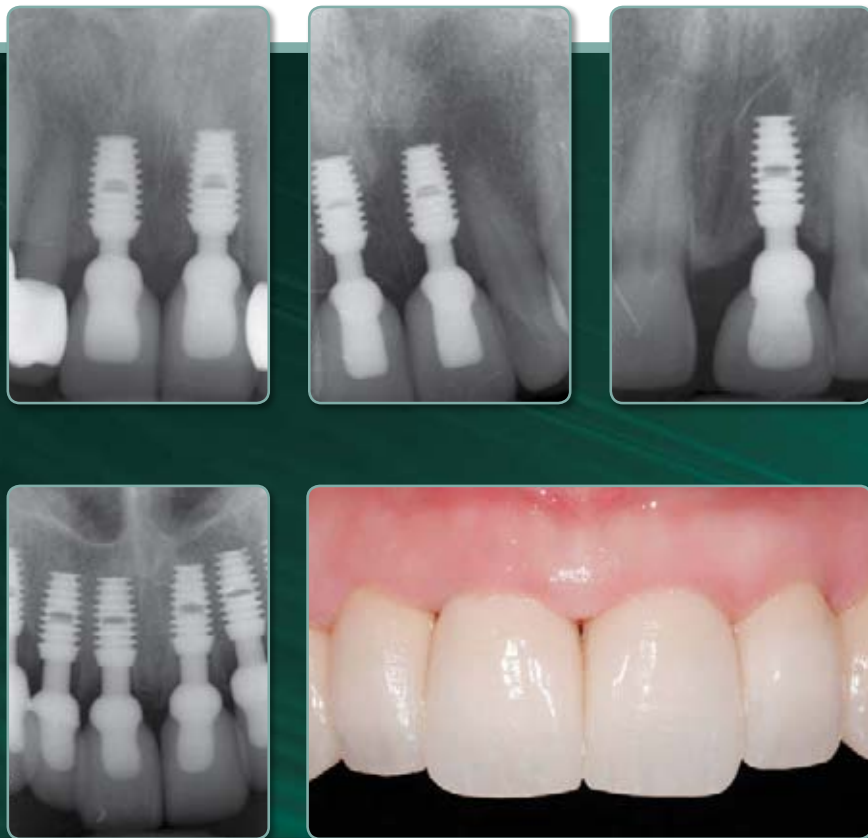


# MAX 2.5™

MAXILLARY ANTERIOR IMPLANTS

**THE MAX 2.5™ IMPLANT** has an enhanced locking taper connection that has been designed for maxillary anterior restorations. Advances in manufacturing capabilities have allowed Bicon to offer this innovation with a 2.5mm diameter internal connection providing greater retention.

- MAX 2.5™ Implants are Bicon's maxillary anterior implants designed for single or multiple tooth restorations.
- Enhanced locking taper connection with a 2.5mm diameter that still allows for retrievability.
- Time-proven Bicon design principles: plateaus, sloping shoulder, and bacterially-sealed connection with 360° of universal abutment positioning.
- Available in four implant sizes and includes a full range of Non-Shouldered, Stealth Shouldered, Temporary, Brevis™ and Healing Abutments.
- The MAX 2.5™ Implants complement Bicon's SHORT™ and NARROW™ Implants.
- While designed for the maxillary anterior region, MAX 2.5™ Implants may be used in all areas of the mouth.



## ENHANCED RETENTION with 2.5mm Abutment Post

### TORQUE TO REMOVE

Versus  
2.0mm Post **76%  
MORE**

Versus  
3.0mm Post **47%  
MORE**

*Dublin Institute of Technology, Dublin, Ireland – November 2009*

## Implants

| Diameter and Surface | Length | Well  | Part Number |
|----------------------|--------|-------|-------------|
| 4.0mm Integra-CP™    | 5.0mm  | 2.5mm | 260-340-255 |
| 4.0mm Integra-CP™    | 8.0mm  | 2.5mm | 260-340-258 |
| 4.0mm Integra-CP™    | 11.0mm | 2.5mm | 260-340-251 |
| 4.5mm Integra-CP™    | 8.0mm  | 2.5mm | 260-345-258 |
| 4.5mm Integra-CP™    | 11.0mm | 2.5mm | 260-345-251 |



## Temporary Abutments

| Description | Diameter | Height | Part Number |
|-------------|----------|--------|-------------|
| 4.0 x 4.5mm | 4.0mm    | 4.5mm  | 260-240-545 |
| 4.0 x 6.5mm | 4.0mm    | 6.5mm  | 260-240-565 |
| 5.0 x 4.5mm | 5.0mm    | 4.5mm  | 260-250-545 |
| 5.0 x 6.5mm | 5.0mm    | 6.5mm  | 260-250-565 |



## Healing Abutments

| Description | Diameter | Height | Part Number |
|-------------|----------|--------|-------------|
| 4.0 x 5.0mm | 4.0mm    | 5.0mm  | 260-240-525 |
| 5.0 x 5.0mm | 5.0mm    | 5.0mm  | 260-250-525 |



## Non-Shouldered Abutments

|  | 4.0mm Diameter              |                              |                              |                            |                             | 5.0mm Diameter              |                              |                              |                            |                             | 6.5mm Diameter              |                              |  |                                  |
|--|-----------------------------|------------------------------|------------------------------|----------------------------|-----------------------------|-----------------------------|------------------------------|------------------------------|----------------------------|-----------------------------|-----------------------------|------------------------------|--|----------------------------------|
|  | 0°                          | 15°                          | 25°                          | 0°                         | 15°                         | 0°                          | 15°                          | 25°                          | 0°                         | 15°                         | 0°                          | 15°                          |  |                                  |
|  |                             |                              |                              |                            |                             |                             |                              |                              |                            |                             |                             |                              |  | Double Line Indicates 2.5mm Post |
|  | 4.0 x 6.5 0°<br>260-240-001 | 4.0 x 6.5 15°<br>260-240-015 | 4.0 x 6.5 25°<br>260-240-025 | 4.0 x 10 0°<br>260-240-101 | 4.0 x 10 15°<br>260-240-115 | 5.0 x 6.5 0°<br>260-250-001 | 5.0 x 6.5 15°<br>260-250-015 | 5.0 x 6.5 25°<br>260-250-025 | 5.0 x 10 0°<br>260-250-111 | 5.0 x 10 15°<br>260-250-115 | 6.5 x 5.0 0°<br>260-265-050 | 6.5 x 5.0 15°<br>260-265-055 |  |                                  |

## Stealth Shouldered Abutments

|  | 4.0mm Diameter              |                             |                             |                              | 5.0mm Diameter              |                              |                             |                              |                             |                              |    |     |  |                                  |
|--|-----------------------------|-----------------------------|-----------------------------|------------------------------|-----------------------------|------------------------------|-----------------------------|------------------------------|-----------------------------|------------------------------|----|-----|--|----------------------------------|
|  | 0°                          | 10°                         | 0°                          | 10°                          | 0°                          | 10°                          | 0°                          | 10°                          | 0°                          | 10°                          | 0° | 10° |  |                                  |
|  |                             |                             |                             |                              |                             |                              |                             |                              |                             |                              |    |     |  | Double Line Indicates 2.5mm Post |
|  | 4.0 x 1.5 0°<br>260-250-300 | 4.0 x 3.5 0°<br>260-250-400 | 5.0 x 2.0 0°<br>260-250-301 | 5.0 x 2.0 10°<br>260-250-302 | 5.0 x 3.0 0°<br>260-250-311 | 5.0 x 3.0 10°<br>260-250-312 | 5.0 x 4.0 0°<br>260-250-321 | 5.0 x 4.0 10°<br>260-250-322 | 5.0 x 6.0 0°<br>260-250-341 | 5.0 x 6.0 10°<br>260-250-342 |    |     |  |                                  |

## Implant Level Impression Components

| Description                        | Part Number |
|------------------------------------|-------------|
| 2.5mm Impression Post and Sleeve   | 260-100-413 |
| 2.5mm Implant Level Impression Kit | 260-100-414 |
| 2.5mm Impression Sleeve (4)        | 260-100-415 |
| 2.5mm Implant Analog (2)           | 260-100-288 |



## Instruments

| Description                        | Part Number |
|------------------------------------|-------------|
| 2.5mm Implant Inserter / Retriever | 260-101-007 |
| 2.5mm Implant Seating Tip          | 260-101-258 |
| 2.5mm Guide Pin (4)                | 260-101-186 |

