

APPOINTMENT 1 RIDGE IMPRESSION

Make impression of the ridge for a wax rim.



The lab will then fabricate a wax rim / bite block.

APPOINTMENT 2 MARK WAX RIM

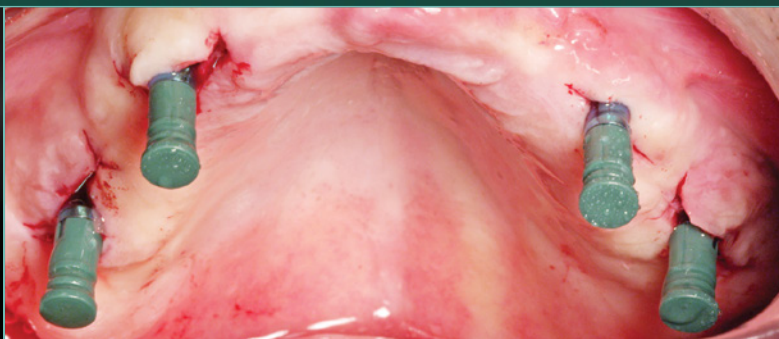
Mark wax rim prior to recording occlusal relationship with:
 ■ Smile Line ■ High Lip Line ■ Midline ■ Accurate Bite



The lab will then fabricate a wax denture setup.

APPOINTMENT 3 WAX TEETH ARRANGEMENT TRY-IN

Make adjustments to wax denture setup. Make implant level impression. Confirm: ■ Phonetics ■ Esthetics ■ Function



The lab will then fabricate a milled TRINIA™ bar with waxed teeth over milled parallel abutments, and wax teeth over TRINIA™ bar.

APPOINTMENT 4 TRINIA™ BAR TRY-IN WITH TEETH

Insert prepped abutments and try-in wax teeth arrangement on milled TRINIA™ bar. Record gingival shade and photo of frontal and profile views.



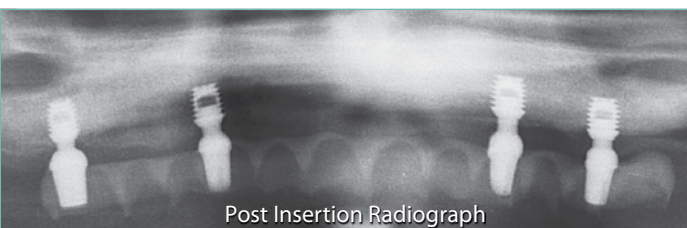
The lab will then finish the gingiva with composite or acrylic.

APPOINTMENT 5 FINAL PROSTHESIS INSERTION

Permanent TRINIA™ prosthesis is used to orient and initially seat abutments prior to the cementing of the TRINIA™ prosthesis.

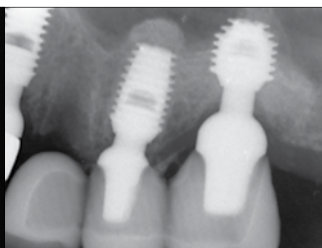
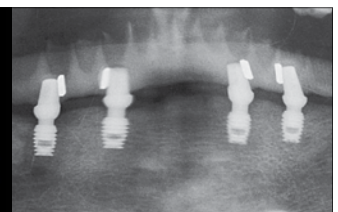
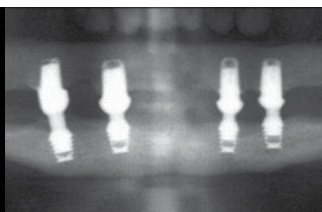


PERMANENTLY CEMENTED TRINIA™ PROSTHESIS





The solution for **metal-free** CAD/CAM restorations



www.trinia.us